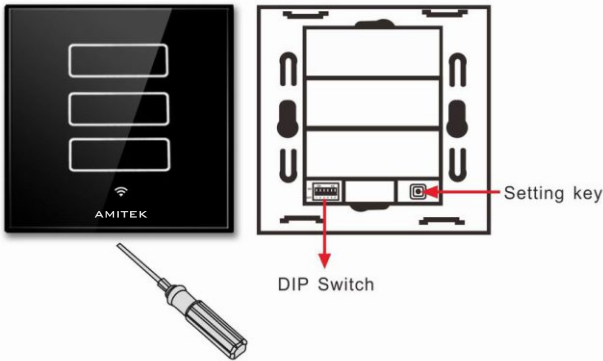
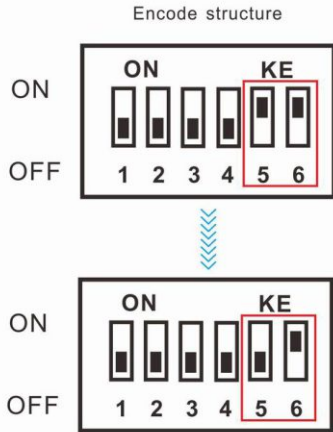




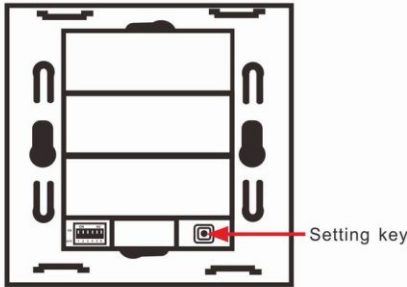
# How to change a 3 gang switch to 1 gang/ 2gang/ curtain switch ?



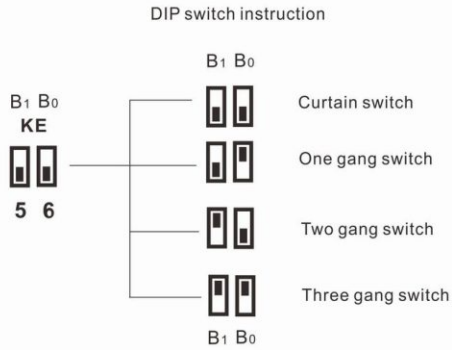
1 Use a screwdriver to separate the three gang switch glass panel and the back shell.



2 If you need to change the three gang switch to one gang switch, please dip the 5 off and 6 on.



3 Press the setting key one second, to reset and cover the one gang switch panel, than the three gang switch change to one gang switch.

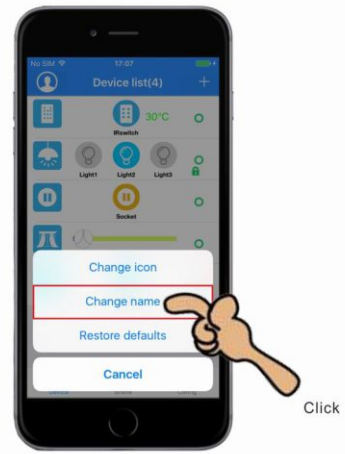


4 Similarly, according to the instruction to change the three gang switch to two gang switch and curtain switch.

# How to change the Device name?



- 1 Keep press the device icon, it will show a **【Device operation】** interface.



- 2 Enter into the operation interface, click **【Change name】** option.



- 3 Change the device name as you want, then click sure.

# How to set Delay operation and auto shut down?



Long press



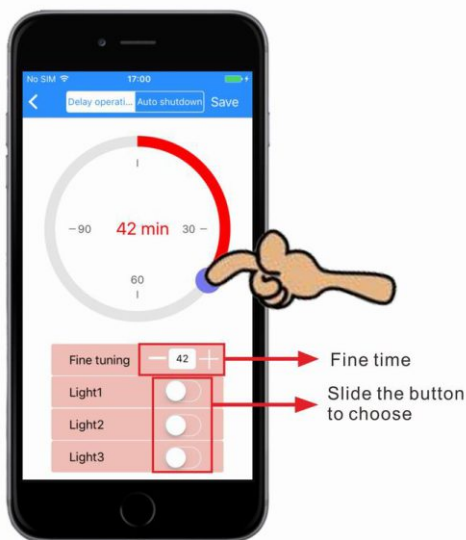
Keep press will show a **【Device operation】** interface.



Click



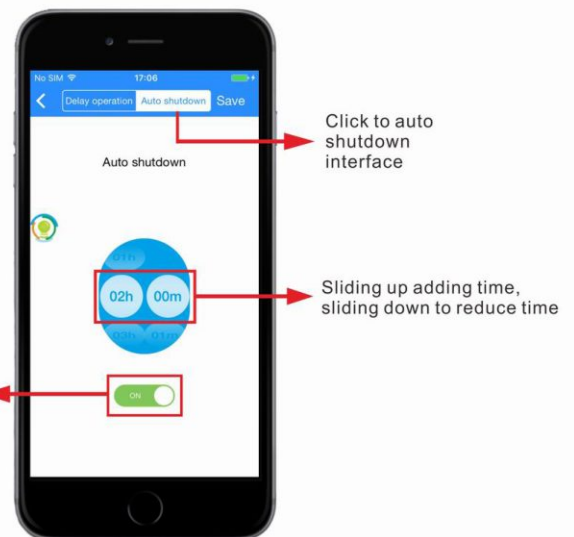
Get into the **【Setting interface】** , click **【Delay operation】** .



Fine time  
Slide the button to choose



Get into the **【Delay operation】** interface, set the delay time as you required.



Click to auto shutdown interface

Sliding up adding time, sliding down to reduce time

Click to turn on or tuen off



Get into the **【Auto shutdown】** interface, adjust the time as you required.

# How to do Time setting?



Long press



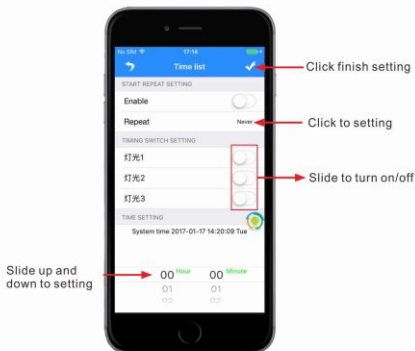
Click



Enter into **【Set time list】** interface, click timing switch, then enter into edit interface.

Keep press will show a **【Device operation】** interface.

Enter into the **【Device operation】** interface, click **【Timing operation】**, then enter into **【Set time list】** interface.

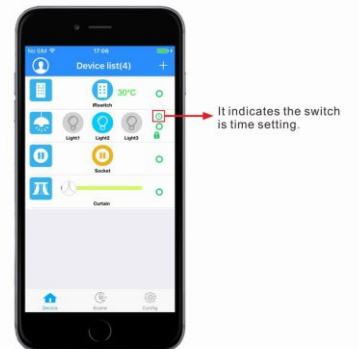


Slide up and down to setting



You can time setting 4 groups at most

Setting succeed



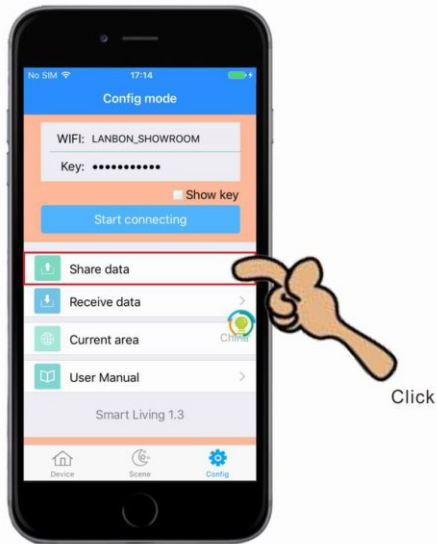
It indicates the switch is time setting.

In **【Timing cycle operation】** interface, choose the item you need to edit.

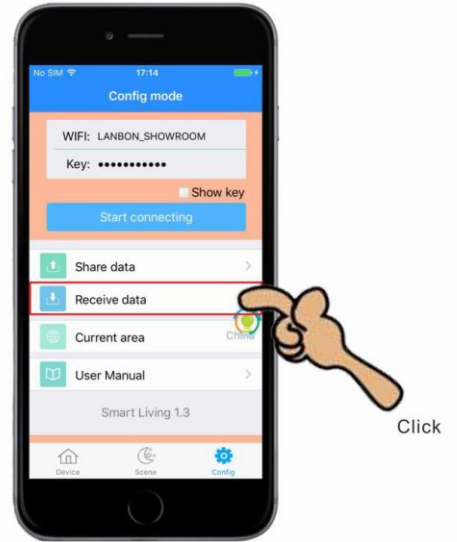
After finishing edit, it will back to previous edit interface, in time setting operation, it will show the information you just edit, setting finished.

Back to device list, there is a **○** icon on the device right corner, it indicates the switch is time setting.

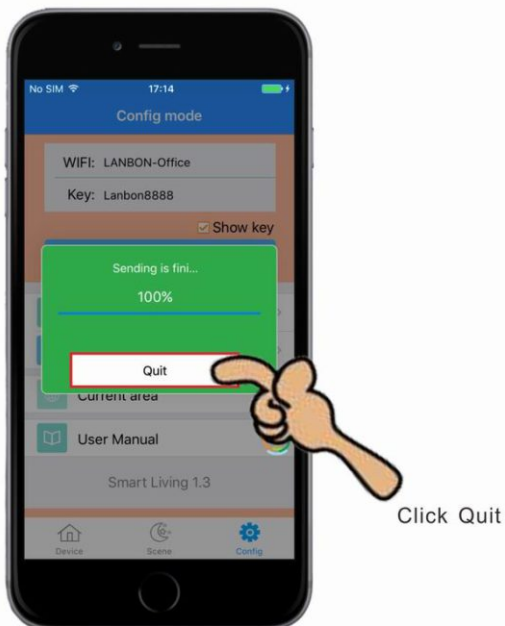
# How to share device data?



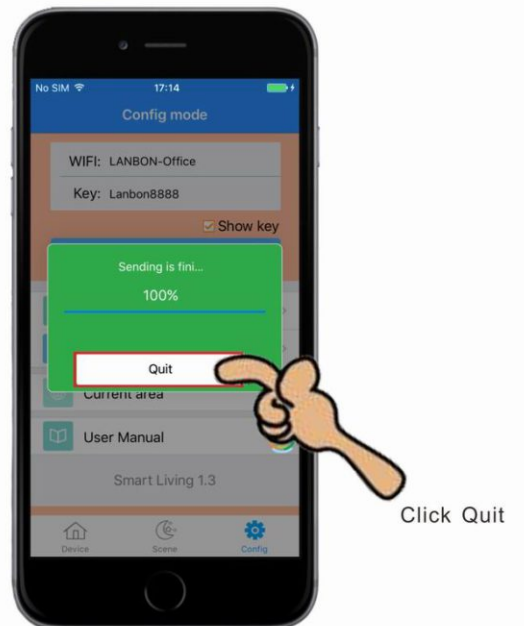
1 Enter the **【Configuration】** interface of the APP, click **【Share data】** .



2 Receive data with another phone, enter the **【Configuration】** interface, click receive **【Receive data】** .

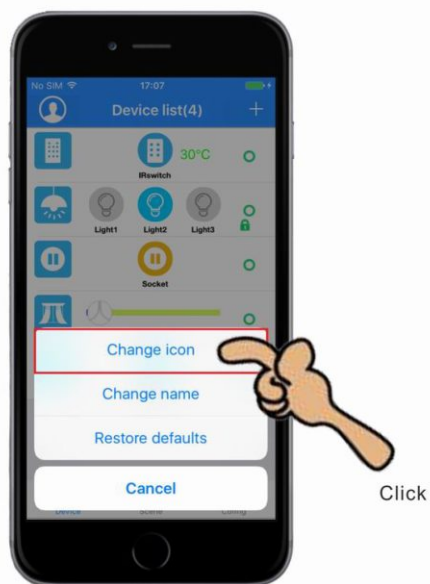
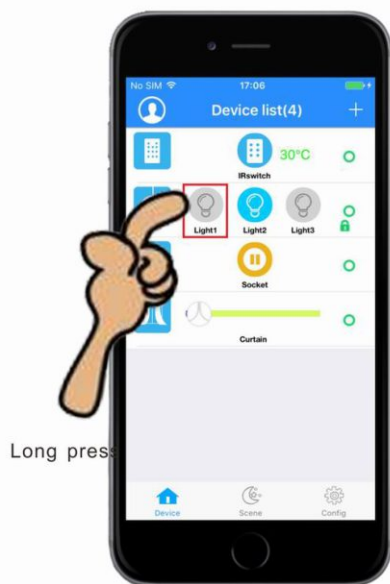


3 Click **【Quit】** when the sending progress is finished.



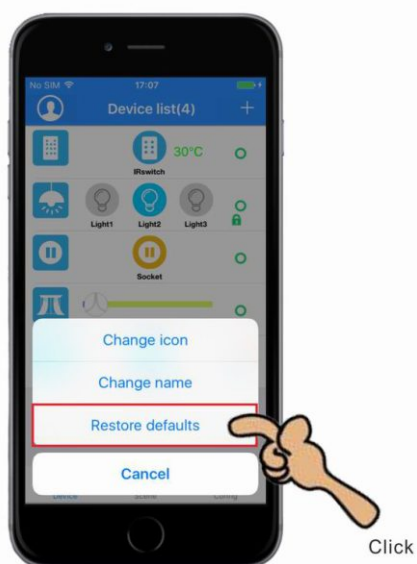
4 Click **【Quit】** when the receiving progress is finished, then share device data is OK.

# How to change device icon?

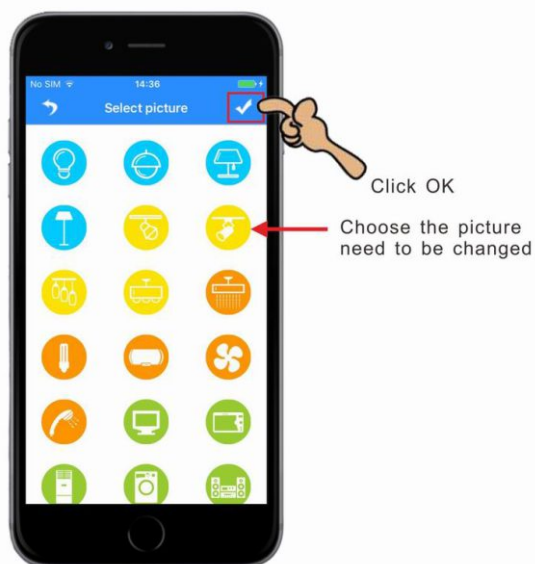


1 Keep press will show a **【Device operation】** interface.

2 Enter operation interface, click **【Change icon】**.



4 Click **【Restore defaults】**, then it will the original icon.



3 Choose the picture need to be changed, then click OK.

# How to change device type icon?



Long press



Click

1 Keep press will show a **【Device operation】** interface.

2 Enter operation interface, click **【Change icon】** .

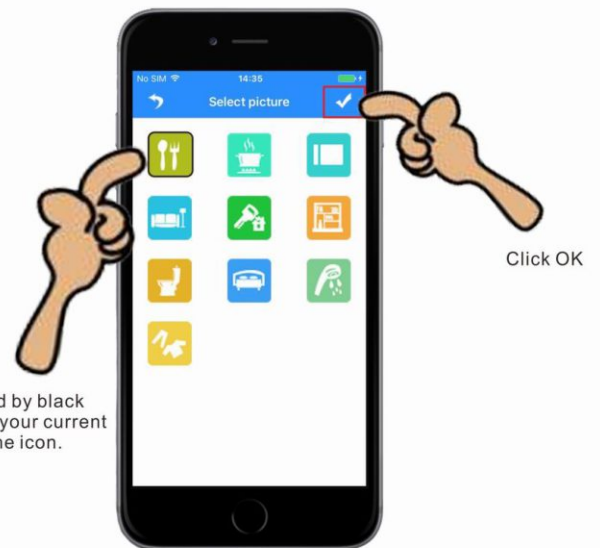


Restore the default icon

The system icon

Custom icon

3 Can be found according to their custom icon, also can choose own icon of the system.



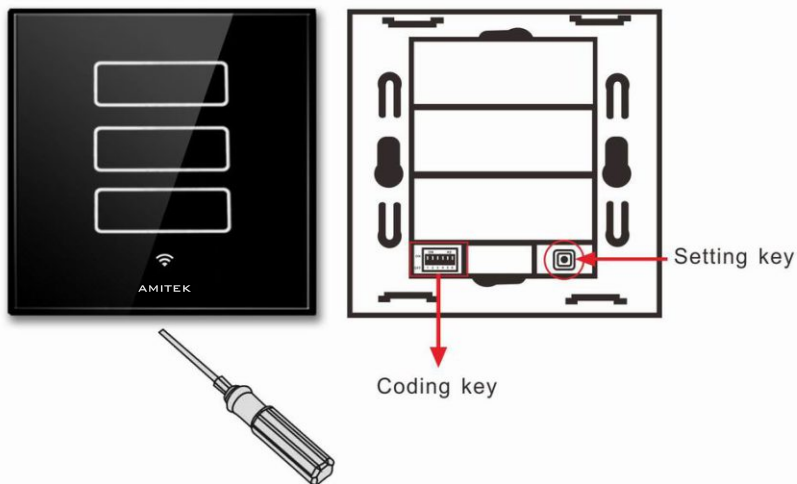
Click OK

Surrounded by black box icon is your current selection the icon.

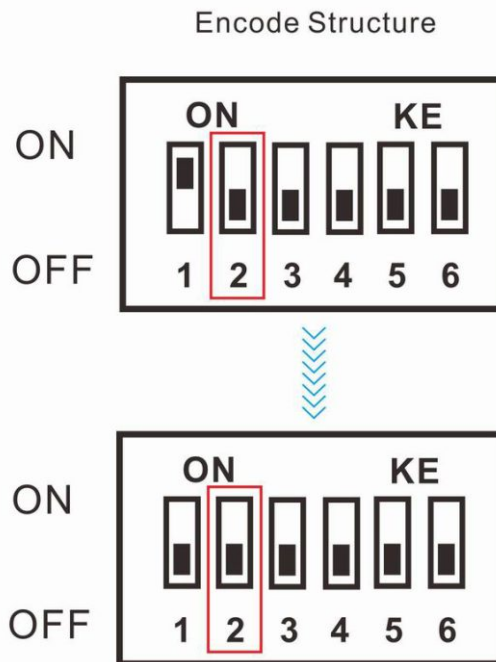
4 Choose to change the icon, click confirm.



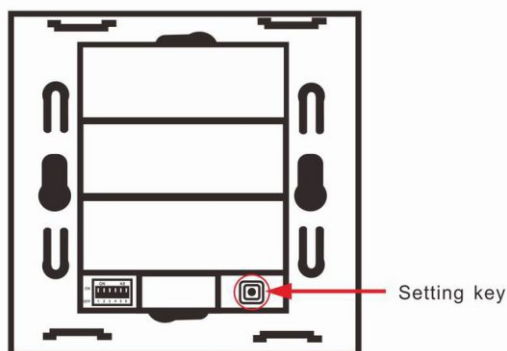
# How to adjust the WiFi switch background indicator?



- 1 Use a small screwdriver to separate the glass panel with back case.

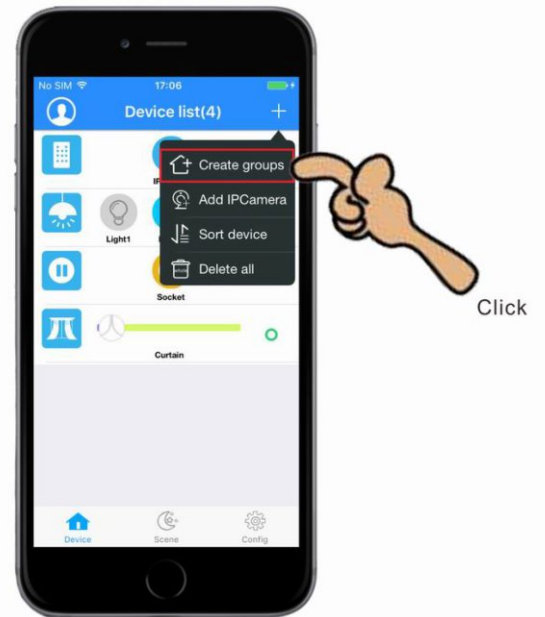
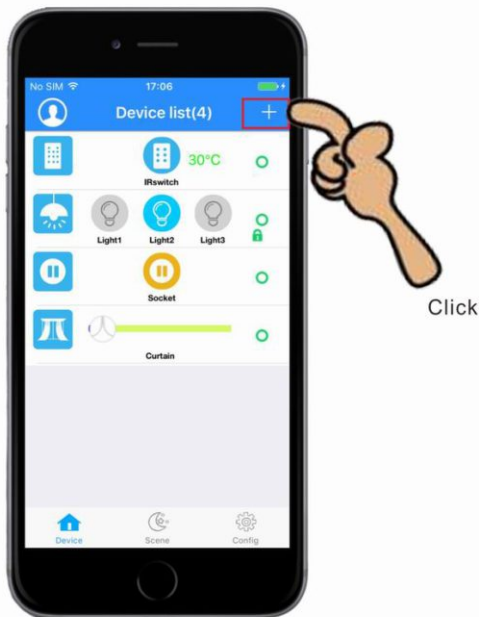



- 2 Dip code 2 on means green/red indicator, dip code 2 off means green/blue indicator.



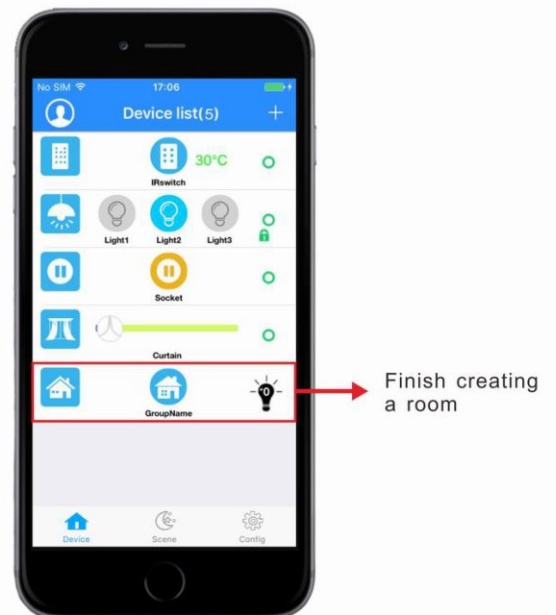
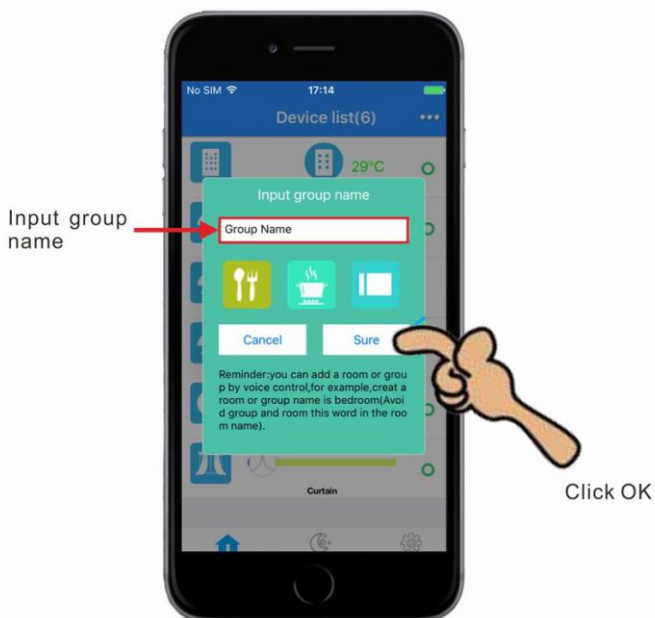
- 3 Press the setting key for 1s to reset, after that you can change the indicator to green/red or green/blue.

# How to create a room?



1 Click on the upper right corner of the icon  , will appear an interface of **【Device operation】** .

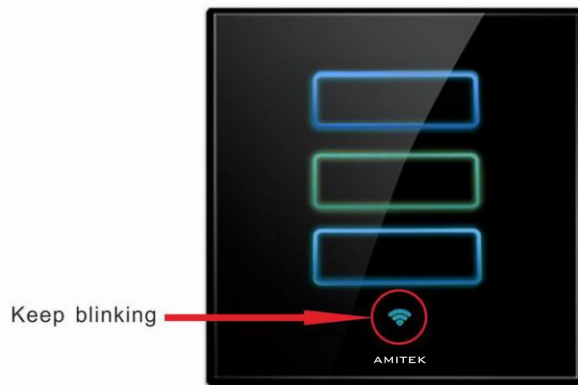
2 Enter the **【Device operation】** interface, click **【Create groups】** icon.



3 Appear **【Input group name】** , then input the group name, click OK.

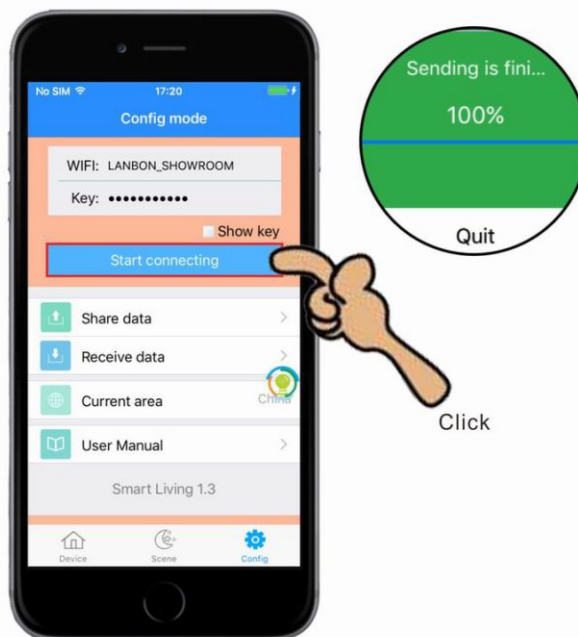
4 Back to **【Device list interface】** , finish creating a room.

# If WiFi indicator keeps blinking, how to solve it?



1

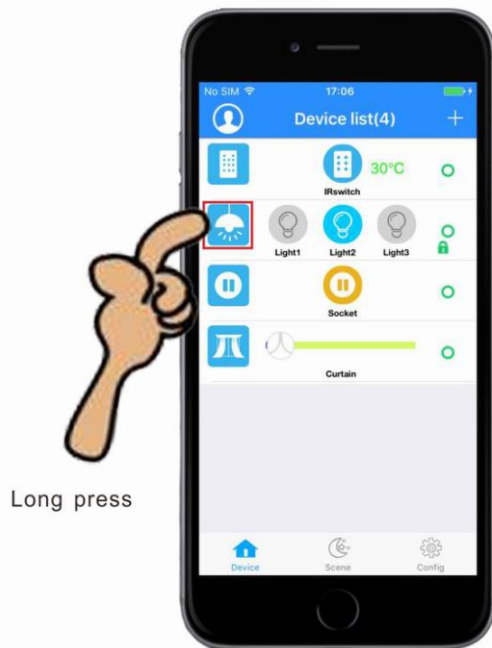
If wifi indicator keep blinking, it means it didn't configured successfully with app.



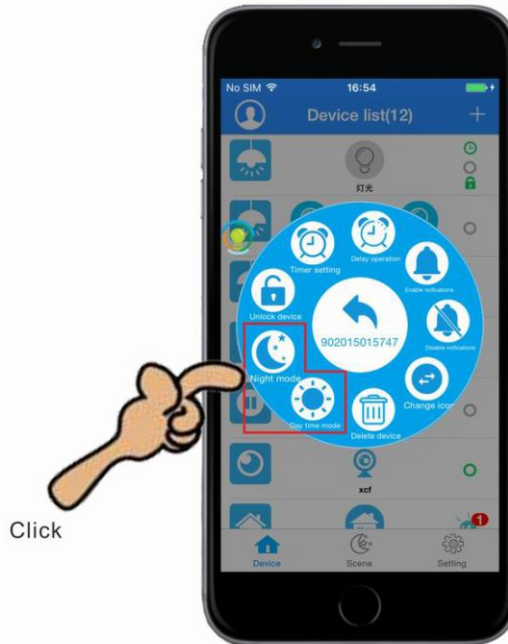
2

Open the app, input the correct wifi name and password, click 【Start connecting】, after the progress reaches 100% then ok.

# How to set the switch touch button voice?



Long press



Click

1 Keep press will show a 【Device operation】 interface.

2 Enter into 【 Device operation 】 interface, click 【 Night mode 】 or 【 Day time mode 】 , you can set as you like.

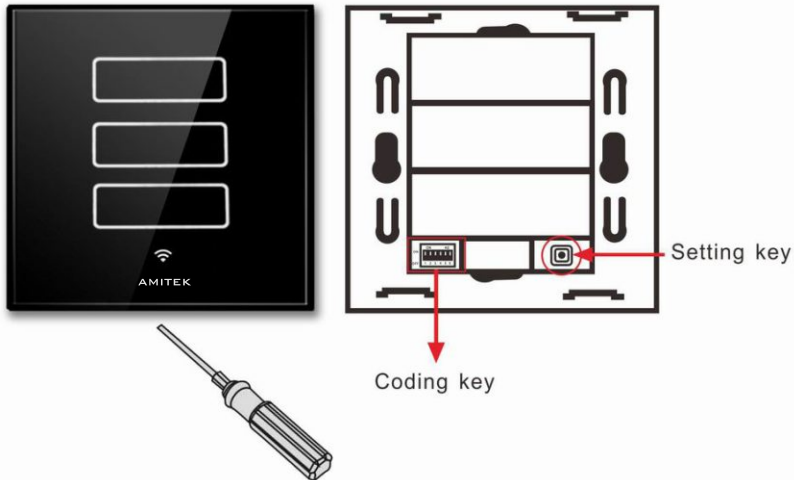


3 Voice on: LED indicator will keep on and have touch voice.

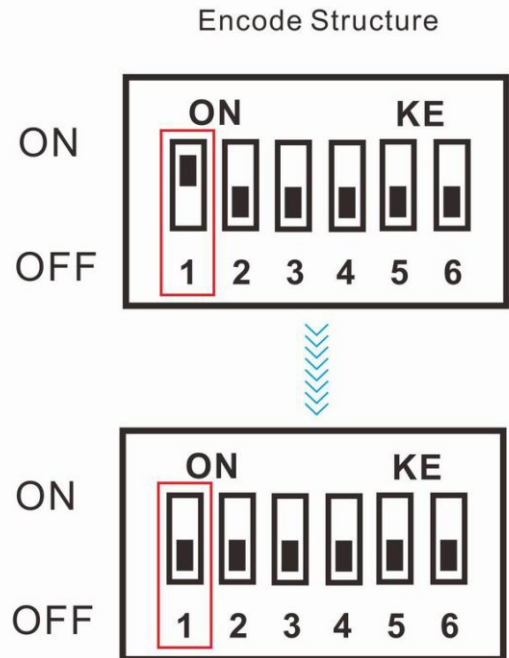


4 Voice off: LED indicator is off, and have small touch voice.

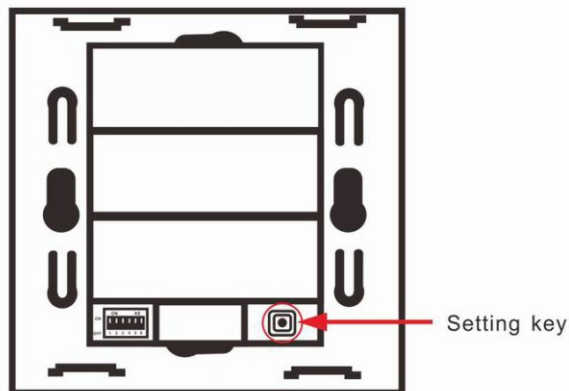
# How to set AP mode?



- 1 Use a small screwdriver to separate the glass panel with back case.

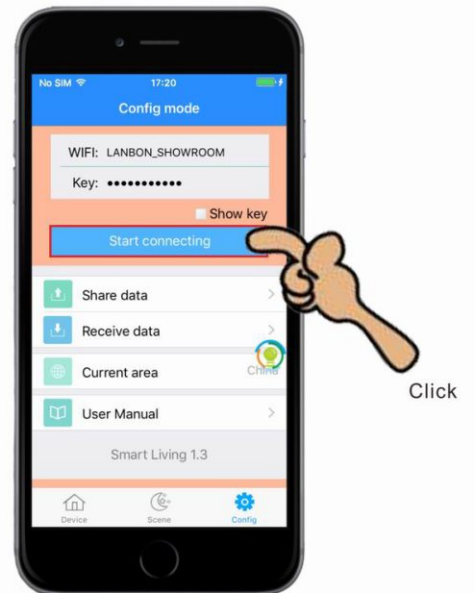
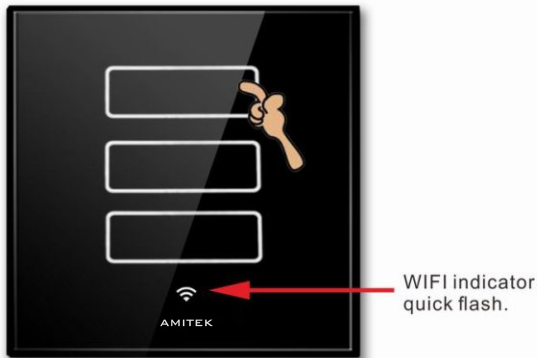


- 2 Dip the code 1 on, it is AP mode, dip the code 1 off, it is wifi mode.



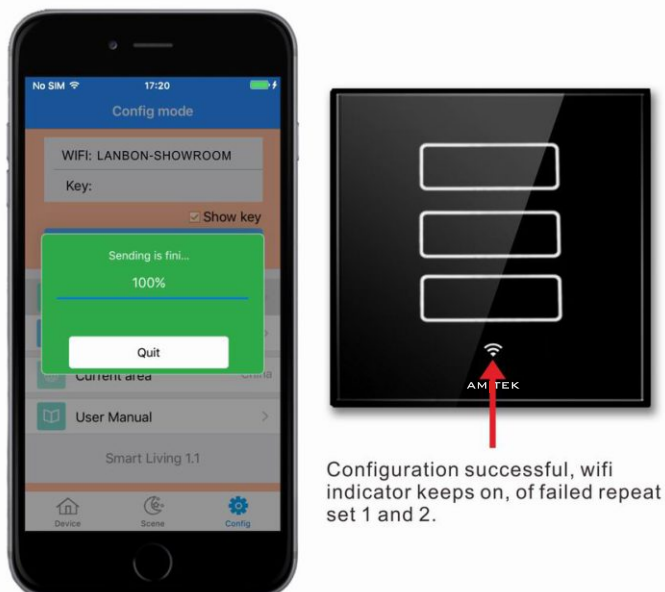
- 3 Press the setting key for 1s, you can reset the switch, and change any mode you want.

# How to configure 2 & 3 gang WiFi switch ?



- 1 Connect smart switch to power, keep pressing switch above button until wifi indicator quick flash.

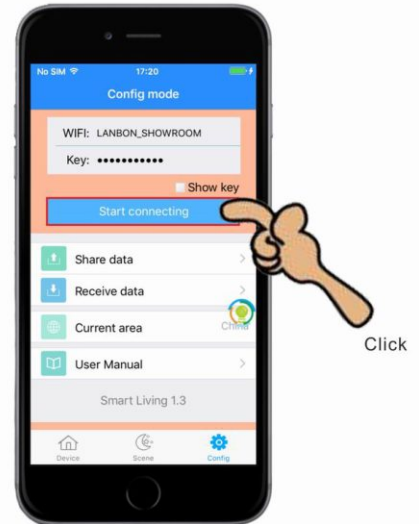
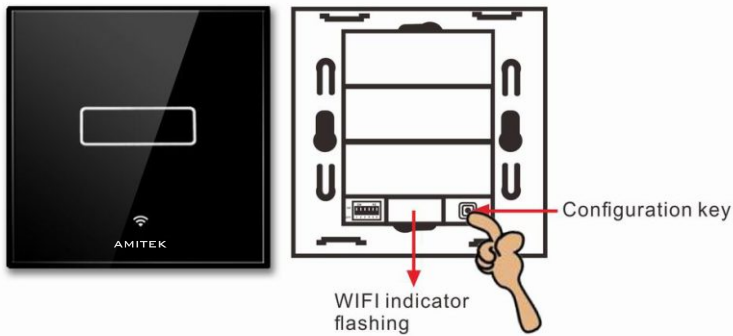
- 2 Open the app, enter into **【Configuration】** interface, input the correct wifi name and password, click **【Start connecting】** .



- 3 The interface darken means it enter into configuration, when progress reaches 100% means finish configuration.

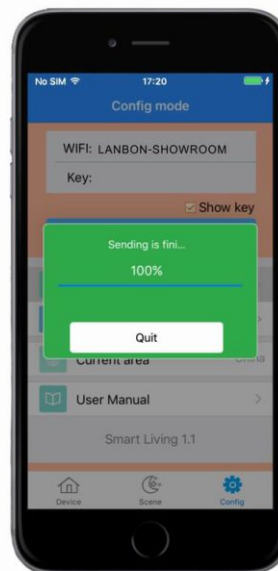
- 4 After configuration, enter **【Device list】** interface, press button to test switch.

# How to configure 1 gang WiFi switch ?



1 Connect the power and separate the glass and the bottom, keep pressing configuration key until the wifi indicator flashing.

2 Open the app, enter into **【Configuration】** interface, input the correct wifi name and password, click **【Start connecting】** .

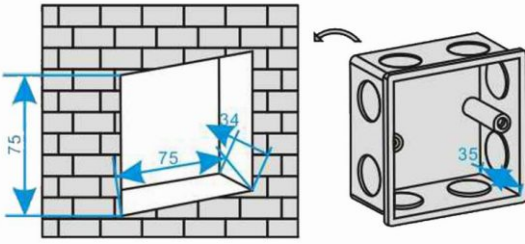


Configuration successful, wifi indicator keeps on, of failed repeat set 1 and 2.

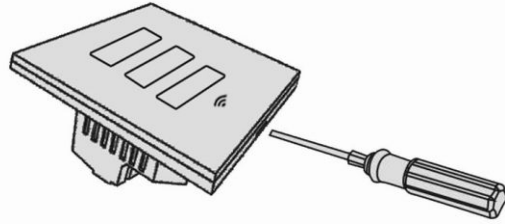
4 After configuration, enter **【Device list】** interface, press button to test switch.

3 The interface darkens means it enters into configuration, when progress reaches 100% means finish configuration.

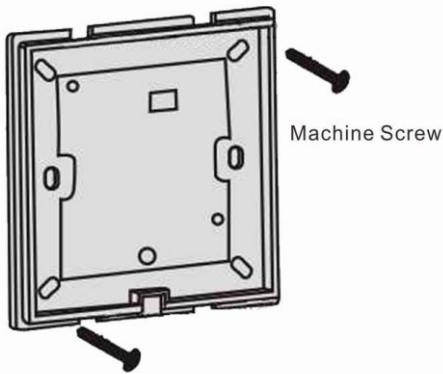
# How to install WiFi switch ?



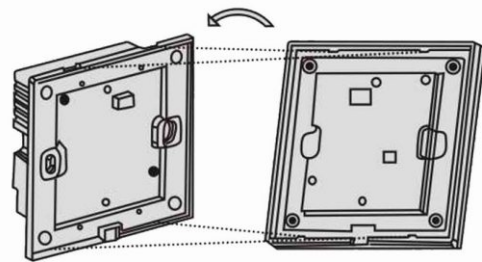
1 Follow the below figure, dig a square groove on the wall of size 75X75X34mm. Put the 86box in it, buried with cement.



2 Separate above and below parts of switch via small screwdriver.

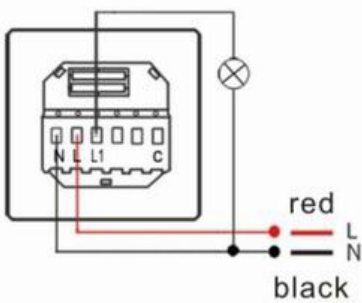


3 Put the switch into the square groove, fixed at the 2 screws.

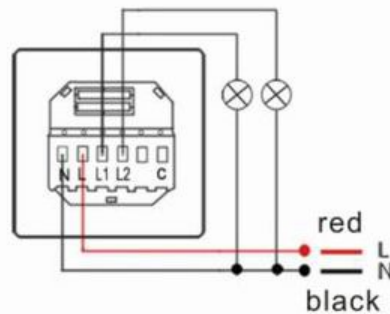


4 Hook up the above bottom placement with 2 hang sets on the bottom box, little strength to hookup the 2 button placement below.

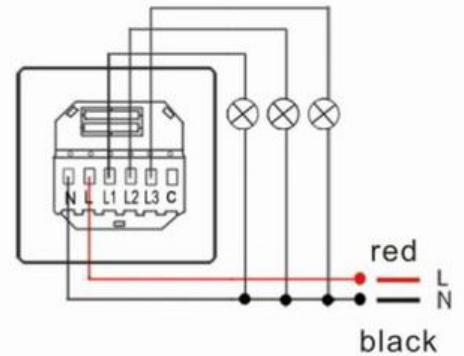
## WiFi switch wiring



1 gang switch



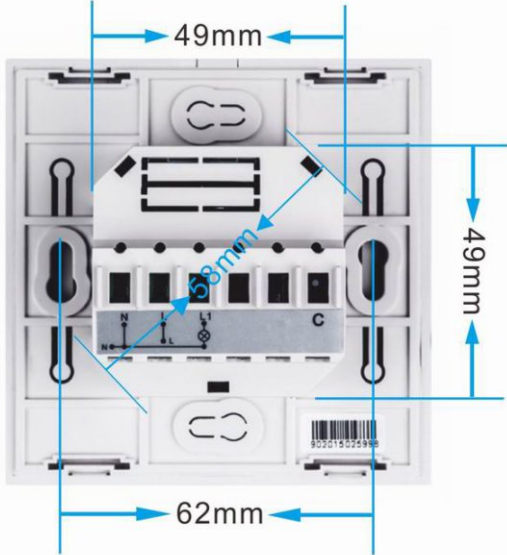
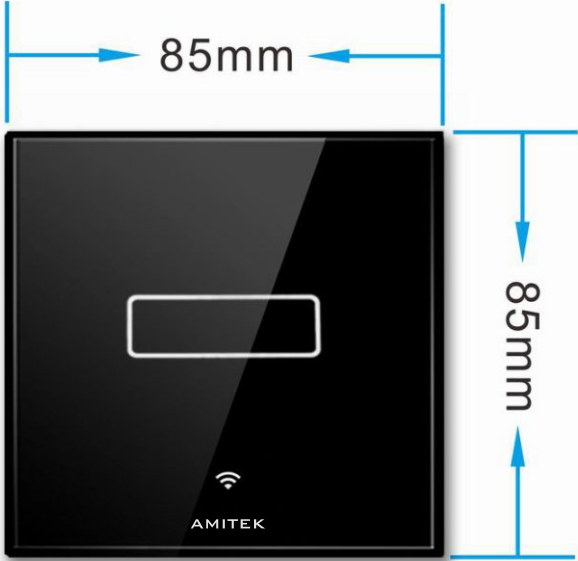
2 gang switch



3 gang switch



# Size of square WiFi switch ?



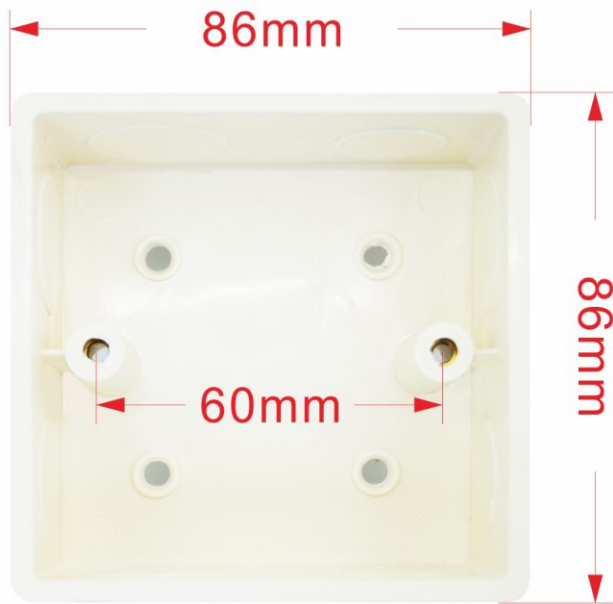
1 square wifi switch glass panel size 85X85mm.

2 square wifi switch back size 49X49mm.



3 square wifi switch side size 41mm.

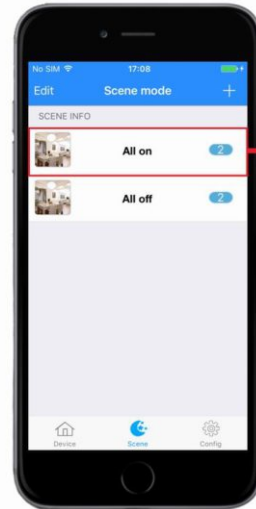
Square base size?



# How to set scene switch?



Keep press the icon for 3s, you will hear a "di" sound.



Click the scene mode you already finished setting.

1

Keep press the icon for 3s, you will hear a "di" sound.(At this moment, please keep your hand on the icon, do not move)

2

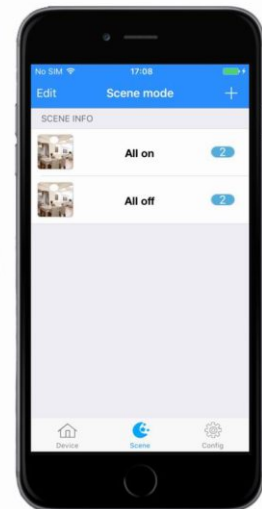
Click the scene mode you already finished setting(At this moment, keep your hand on the icon, do not move), configuration finished.(All the buttons setting on the scene switch is the same)



Click to test



&



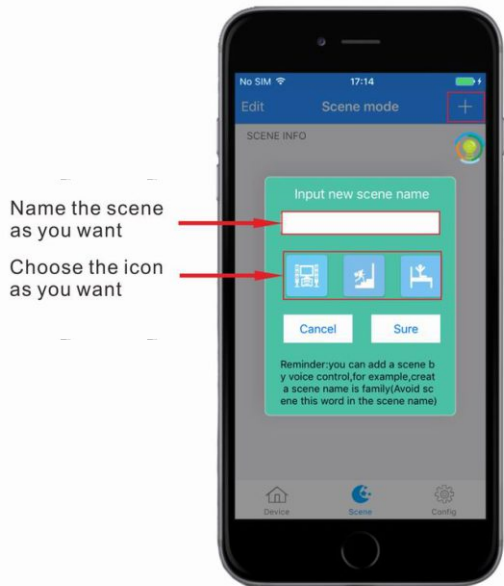
3

After finished configuration, please test those buttons you already set, if the switches turn on/off when you press the button, then it indicates your configuration is succeed.

4

Both the scene switch and mobile phone can control the devices, if you failed the configuration, please repeat the steps 1 & 2.

# How to set scene on app?



Click to edit the scene

Keep press the icon



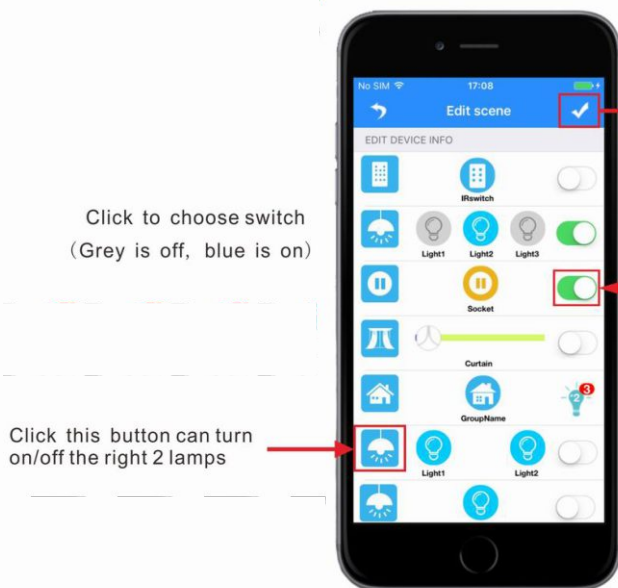
Click to edit the scene

1

Open the app, enter into **【Scene】** interface, click the right up corner **+** to create scene, name the scene as you want. (Like all on, party, all off...)

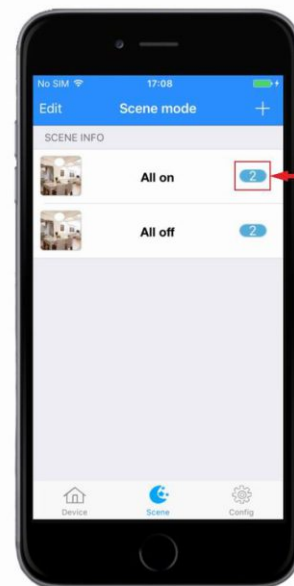
2

Keep press the icon, it will show edit **【Scene operation】**, click to **【Edit scene】**.



3

Enter into **【Edit scene】** interface, set all the devices as you need.

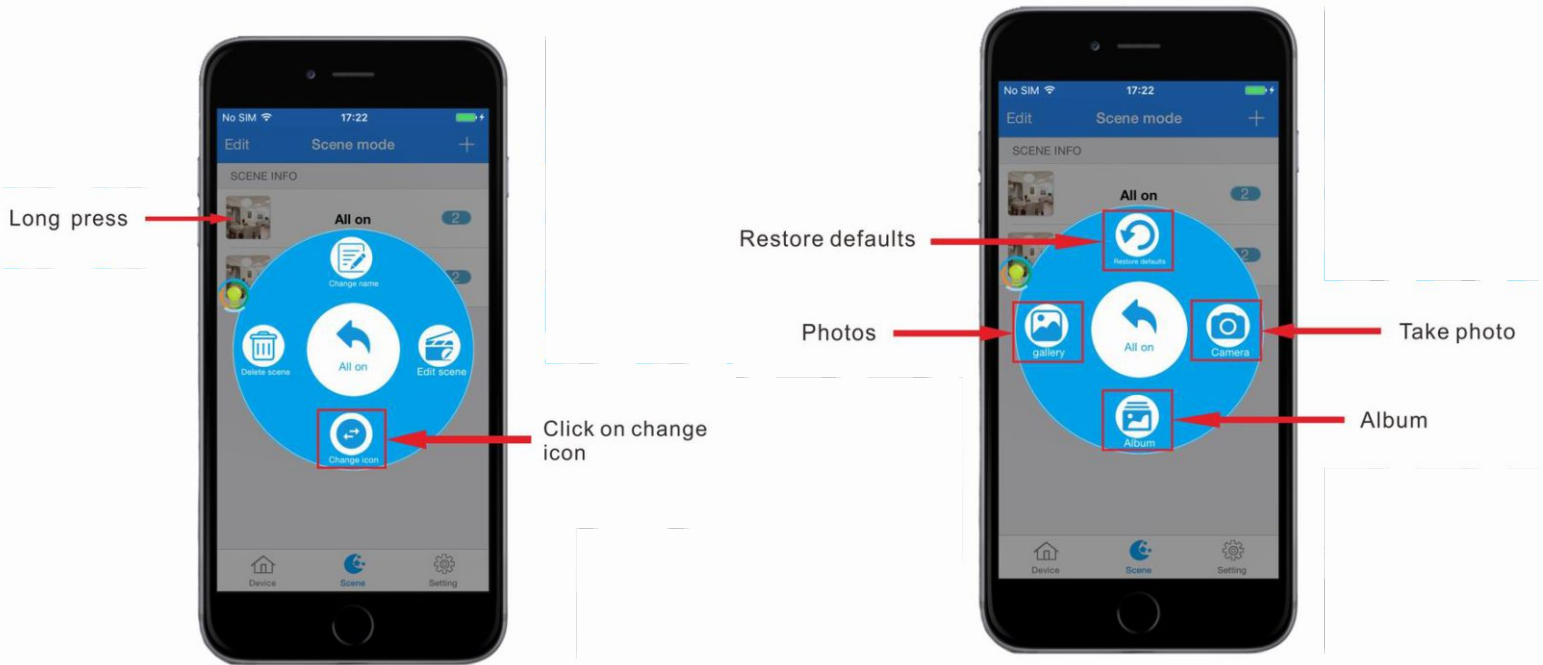


The device quantities

4

After confirm, then it will back to **【Scene mode】** interface

# How to change the icon of scene mode?



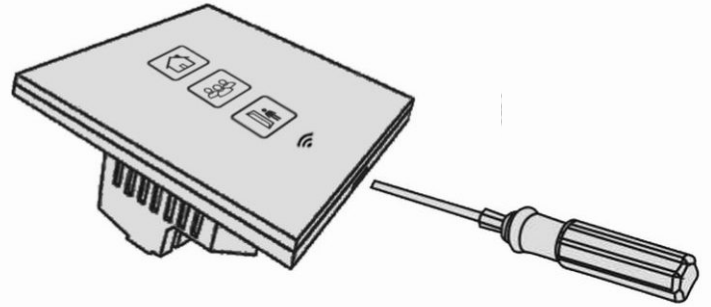
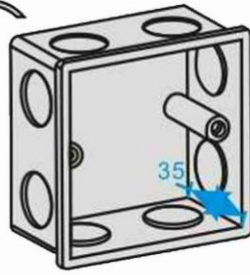
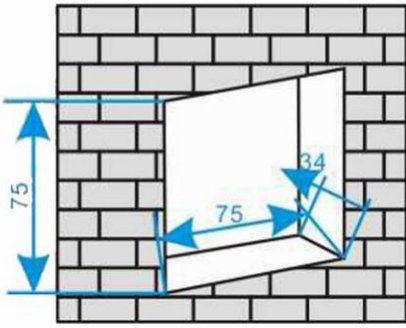
1

Long press the icon, will appear scene operation interface, the click **【Change icon】** .

2

Four ways to change the icon,  
1.Take photo 2.Select from photos  
3.Select from album 4.Restore defaults.

# How to install Scene switch?

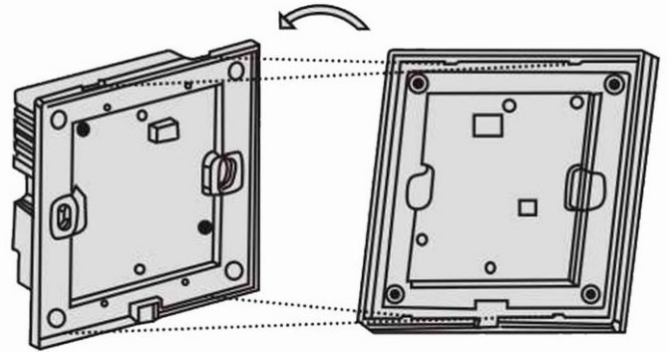
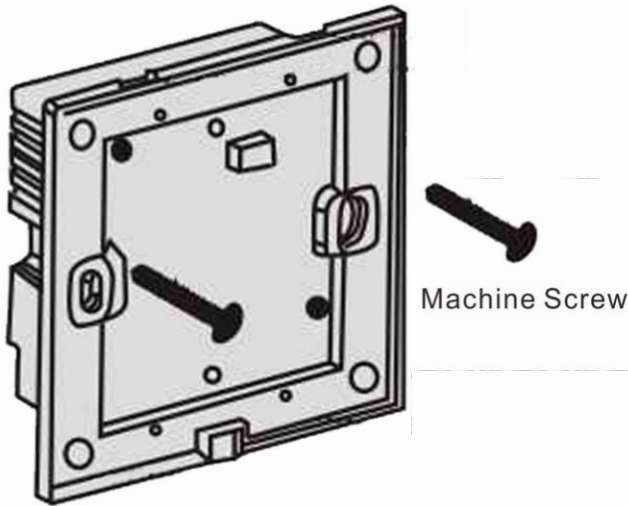


1

Follow the below figure, dig a square groove on the wall of size 75X75X34mm. Put the 86box in it, buried with cement.

2

Separate above and below parts of switch via small screwdriver.



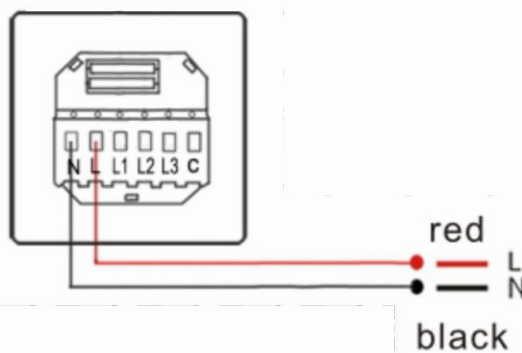
3

Put the switch into the square groove, fixed at the 2 screws.

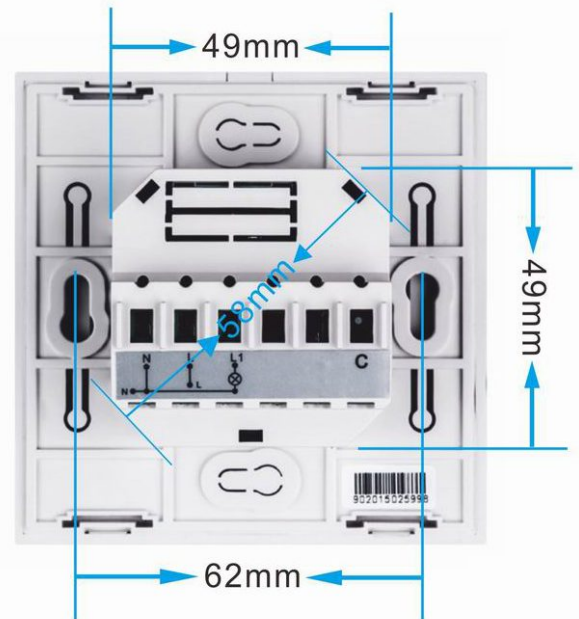
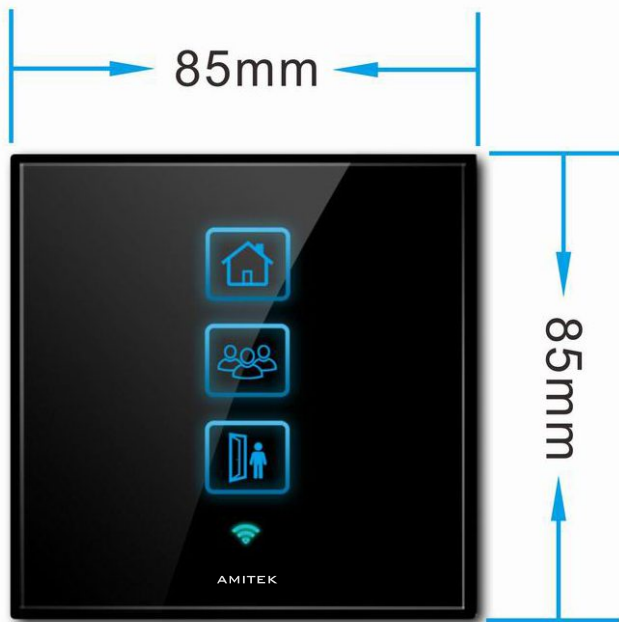
4

Hook up the above bottom placement with 2 hang sets on the bottom box, little strength to hookup the 2 button placement below.

## Scene switch wiring



# Standard scene switch size?



1

China standard scene switch panel size: 85X85mm.

2

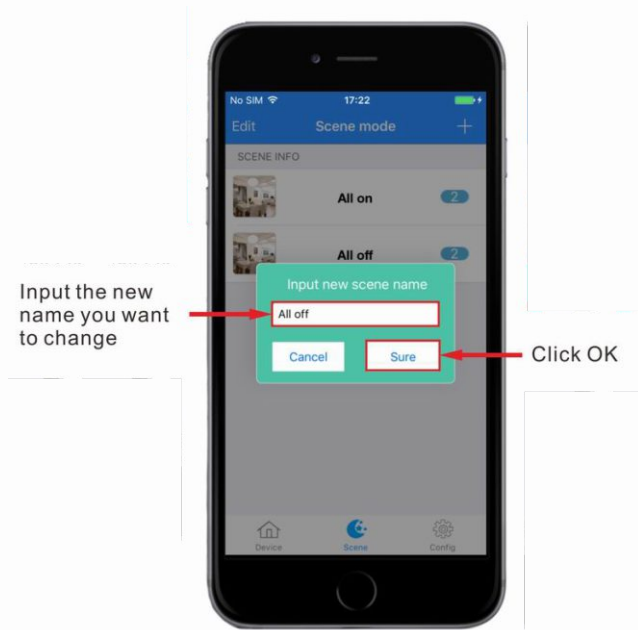
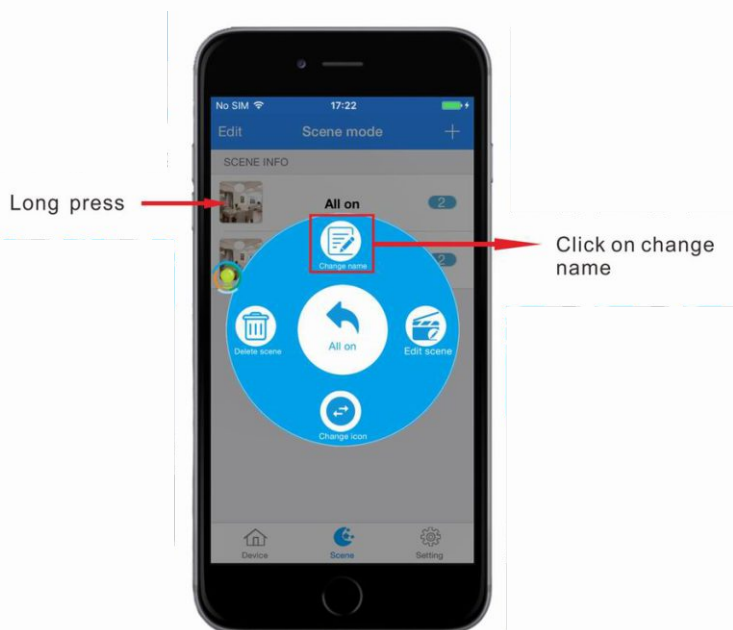
China standard scene switch back size: 49X49mm.



3

China standard scene switch lateral size: 41mm.

# How to change the name of the scene ?



1

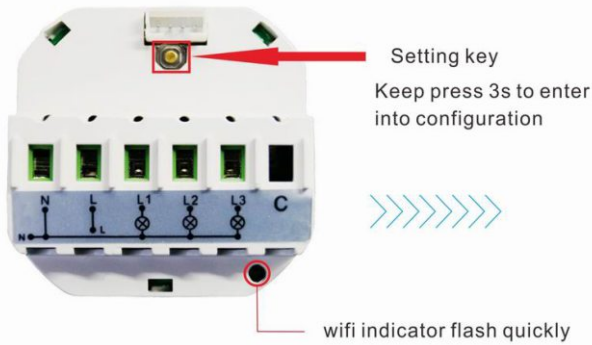
Long press the icon, will appear scene operation interface, the click **【Change name】**.

2

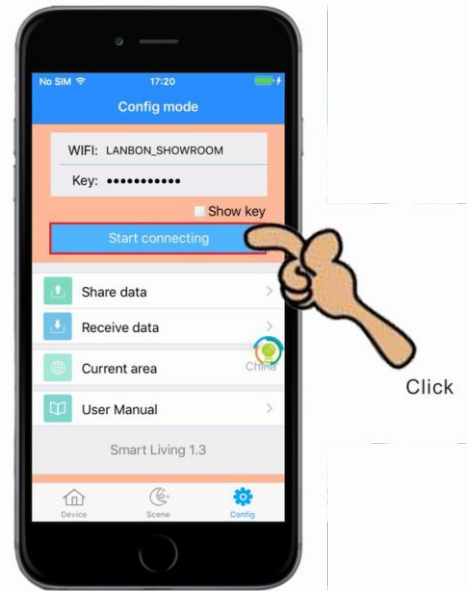
Delete old scene name, input new name you want to change, then click OK.



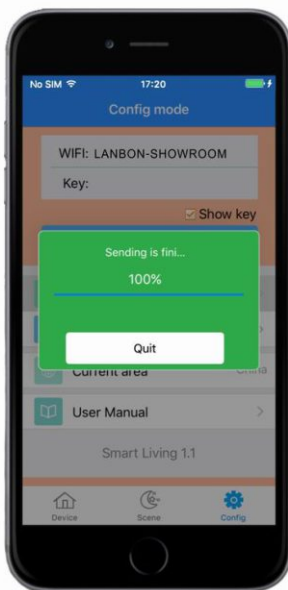
# How to operate WiFi switch module ?



- 1 Connect the module with normal switch, keep press the setting key for 3s to enter into configuration, wifi indicator start flash quickly.



- 2 Open the app, enter into **【Configuration】** interface, input the correct wifi name and password, click **【Start connecting】** .

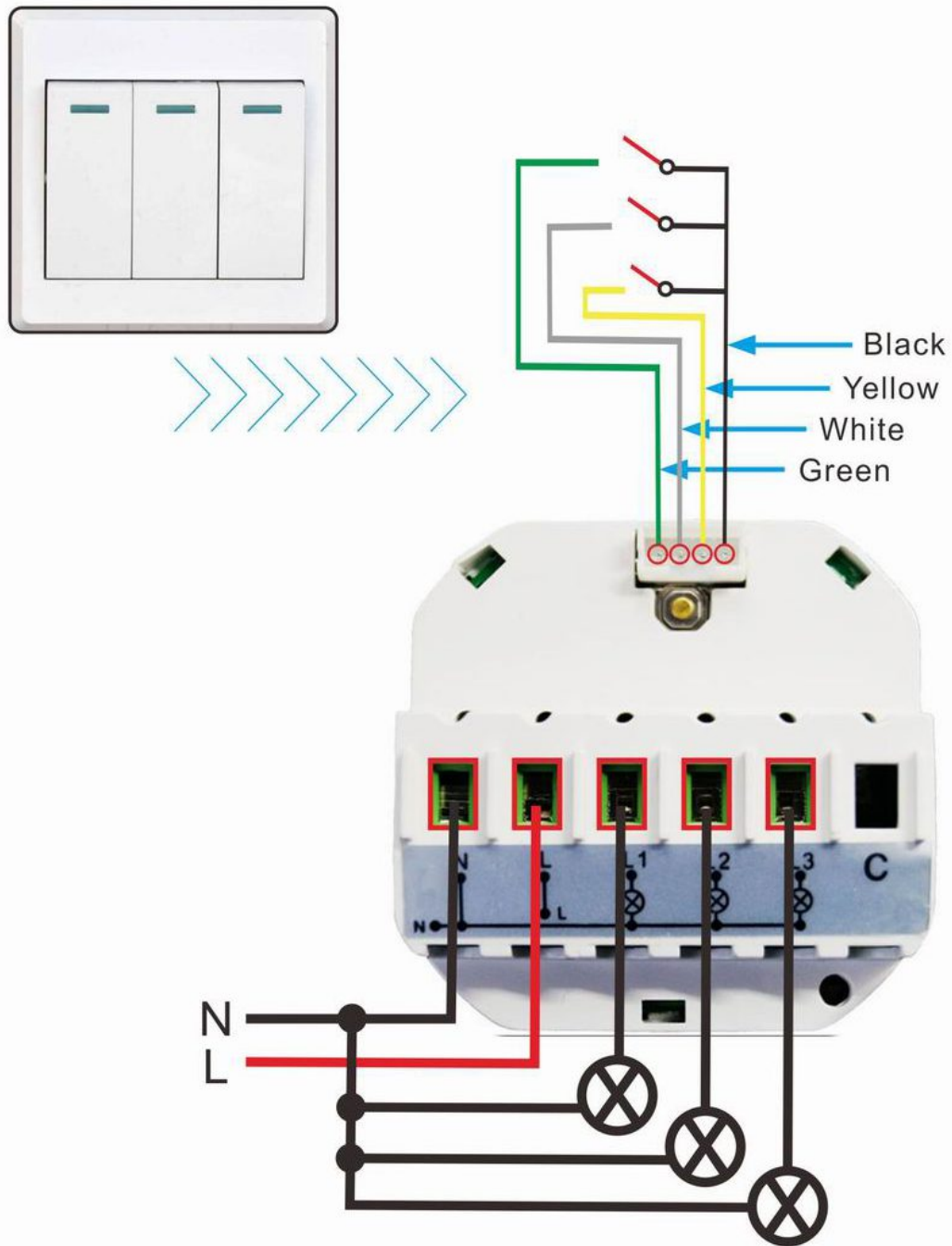


- 3 The interface darkens means it enters into configuration, when progress reaches 100% means finish configuration.

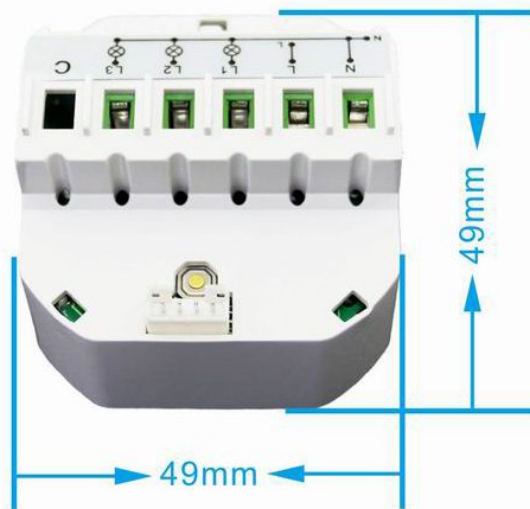


- 4 After configuration succeeds, then enter control device interface, click icon to test.

# How to install and connect the wiring of WiFi switch module ?

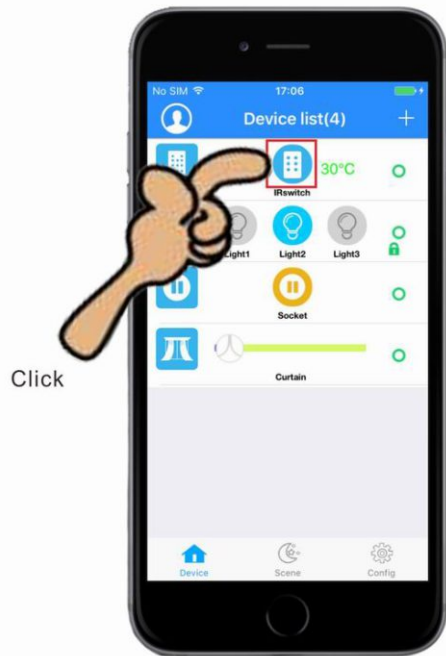


## WiFi switch module size ?

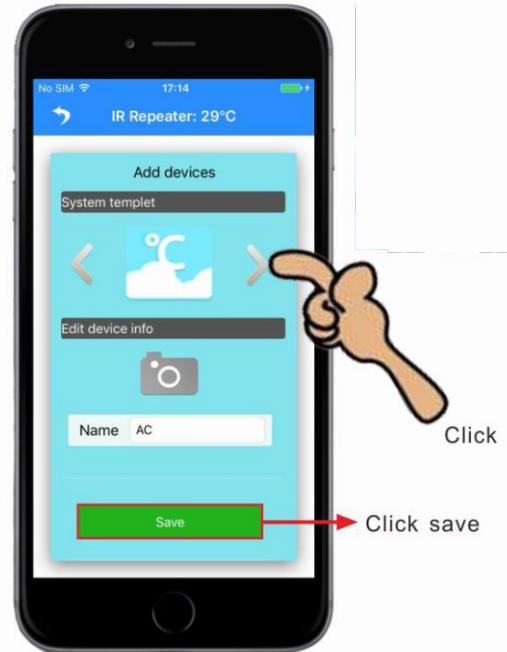


The size of module is 49X49X36mm.

# How to add device ?




Click



Click

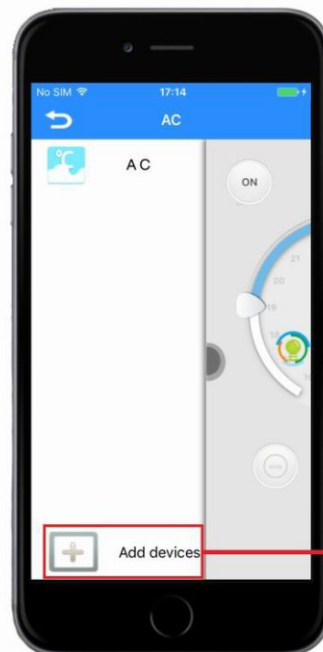
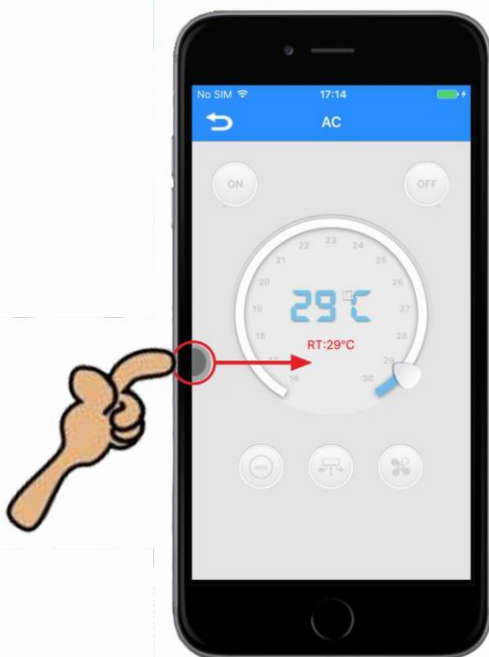
Click save

1

Click  enter into **【IR interface】**, add devices as you want.

2

Click the icon under the system templet, add the devices you need, click save button.

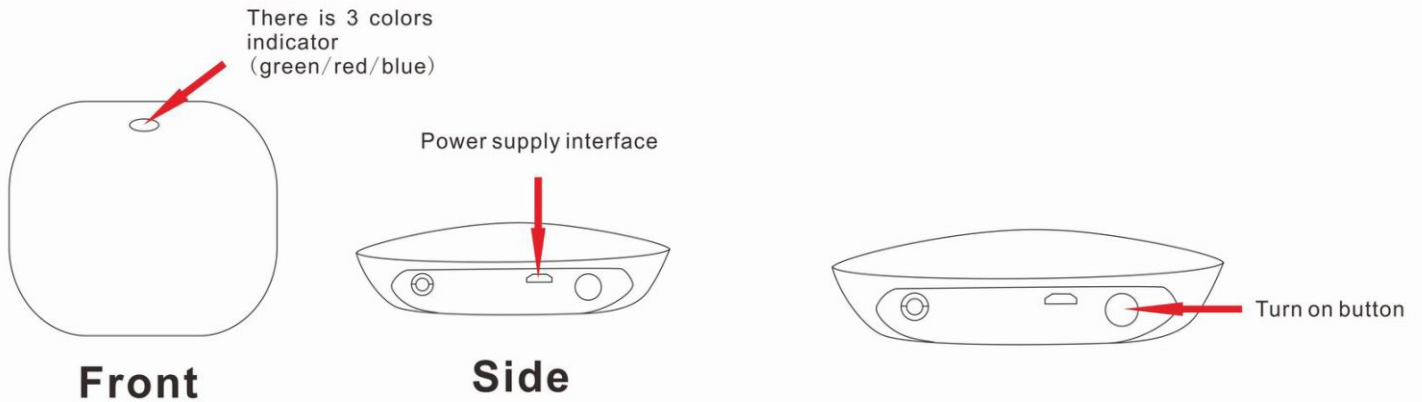


Click enter into add devices interface

3

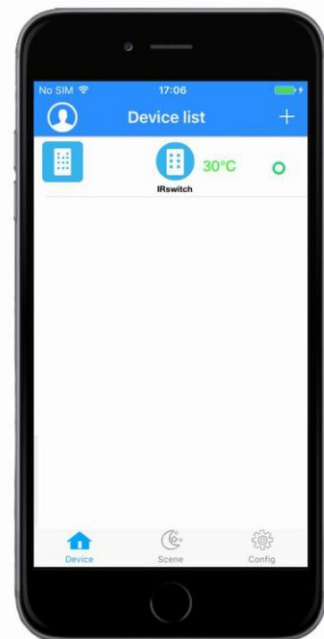
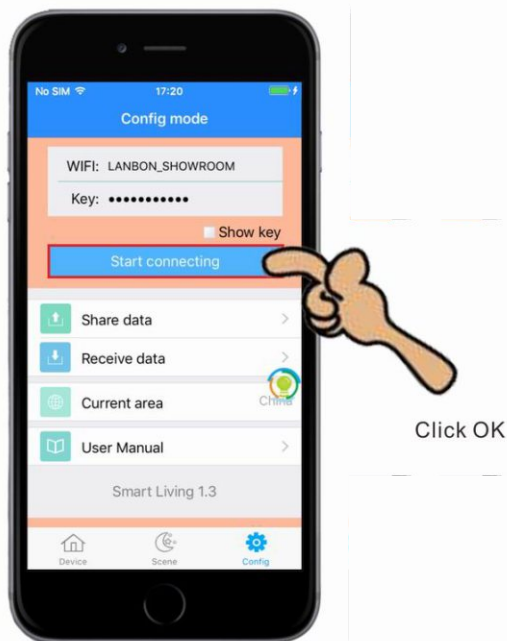
Press the center shadow area, slide to right can add more devices.

# How to set WiFi IR Repeater ?



- 1 Power on the IR Repeater, the green indicator will flash quickly around 5s, the red/blue indicator will keep on, then it means the IR startup.

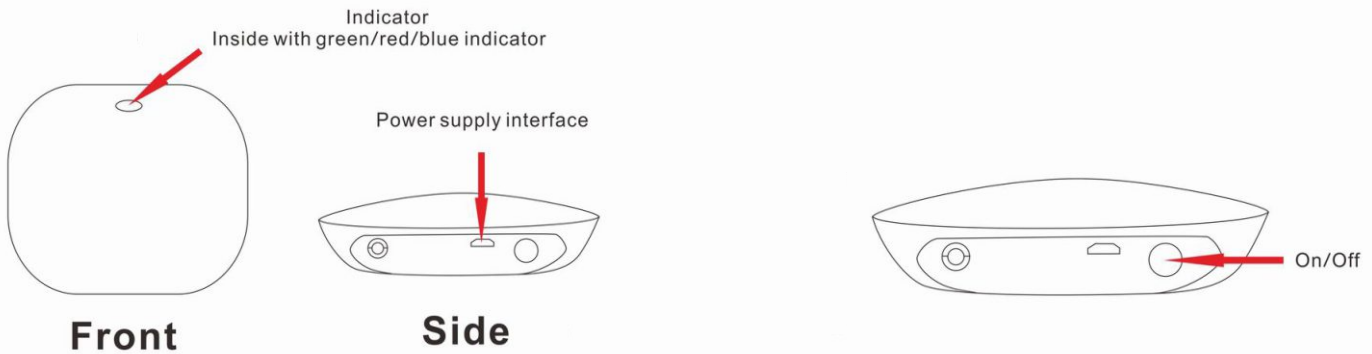
- 2 Keep press the on buttons, the IR will have a "di" sound, blue indicator start flash quickly, then the IR enter into configuration.



- 3 Open the app, enter into **【Configuration】** interface, input the wifi password, click **【Start connecting】**, the IR will have a "di" sound, then start configuration.

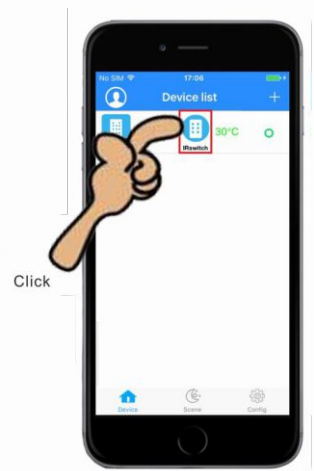
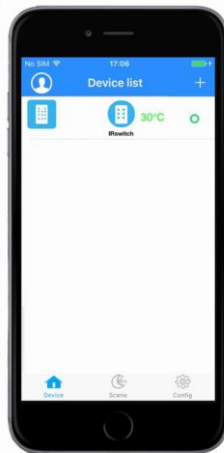
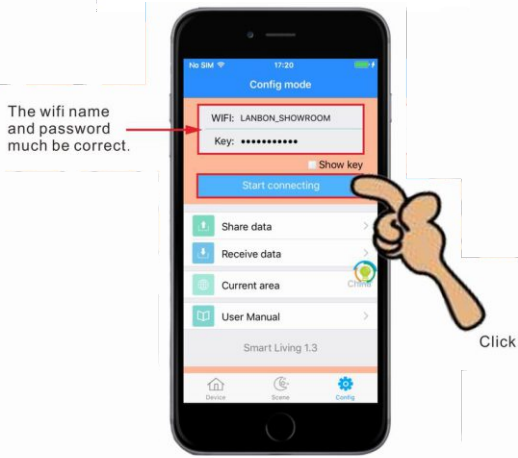
- 4 After finish configuration, the blue indicator will stop flash, it will back to **【Device list】** interface.

# How IR control the AC temperature ?



**1** Connect with power, the green indicator will quick flash 5 times, and then red/blue indicator keep turn on. This indicates the IR startup normal.

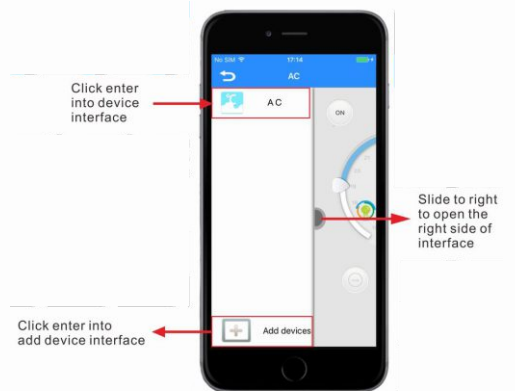
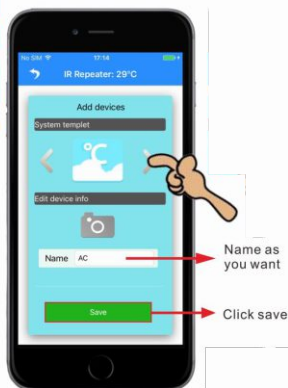
**2** Press the on/off button, the IR will have a sound "di", then the blue indicator flash, the IR enter into configuration.



**3** Open the app **【Configuration】** interface, input the wifi name and password, click **【Start connecting】**, the IR will have a "di" sound, then it indicates the IR start configuration.

**4** After configured successfully, the blue indicator will stop flash, it will back to device interface directly.

**5** Click **⊞** enter into "IR" interface to add the device.



**6** Click the icon under **【System Templates】**, choose those device you want to add, then click **【Save】**.

**7** After save successfully, it will back to "AC" interface.

**8** Open the left side interface, click **【Add device】**, you can enter into **【Add device】** interface to choose those device you want to add again.



Click move up, it automatically pop-up small window learning (as shown below)



The temperature adjustment is based after settled state



Click move up, it will automatically pop-up small window learning, the IR will have a sound "di", then put the remote controller at the top center of the IR, press the temperature button, if the IR have a "di" sound, it means learn successful.

After learning, the font color will be deepened



Click move down, it will automatically pop-up small window learning (as shown above)

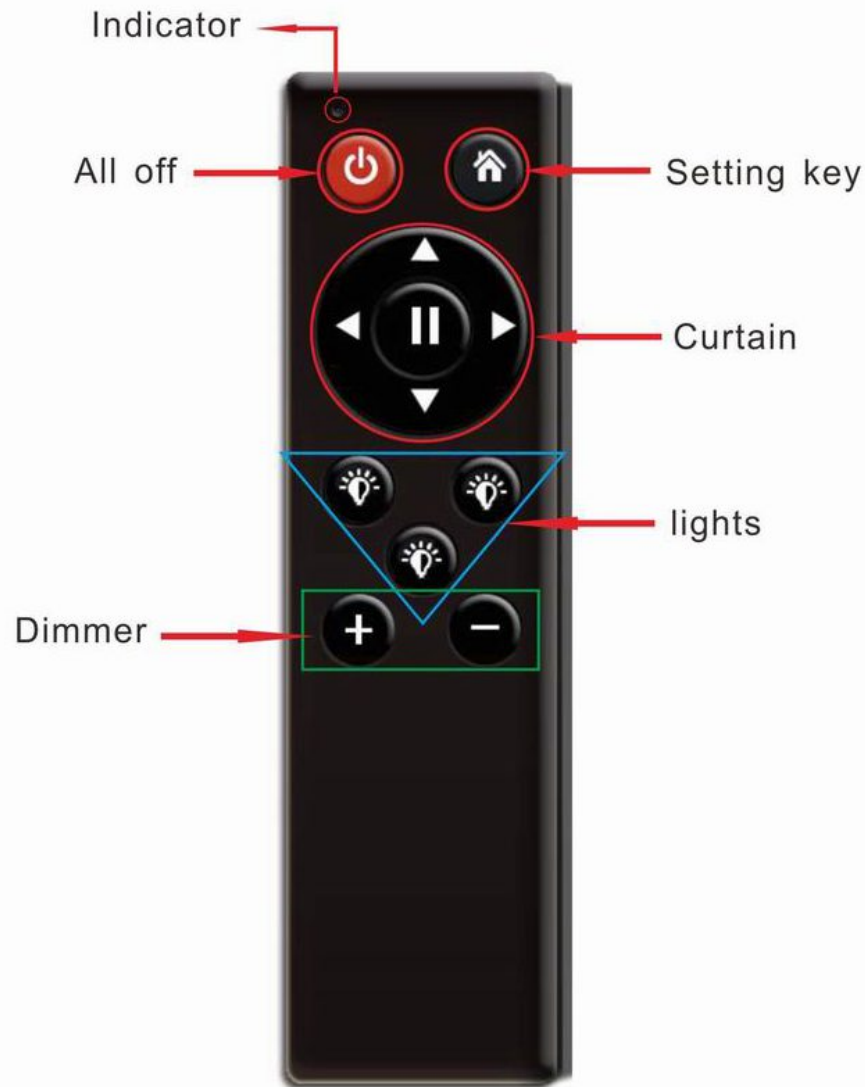


Keep press 5s can delete those buttons you already learned, and re-learning again



Friendly remind:  
If those buttons you have learned are not work, please delete it and re-learning again.

# How many devices 1 remote controller can control?

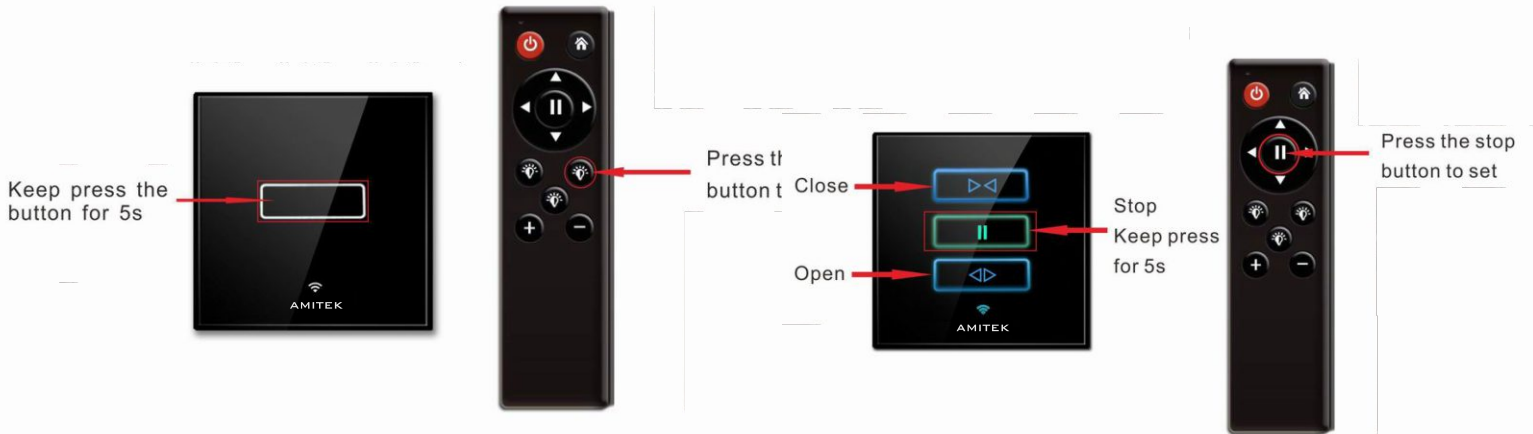


1 remote controller can control 3-4 devices at most.

- You can control 2 sets curtain switch.
- You can control 1gang,2gang,3gang light switch(you can pair the 2 buttons with 3 lights as you want).
- You can control 1 set dimmer switch.



# How to set remote controller?

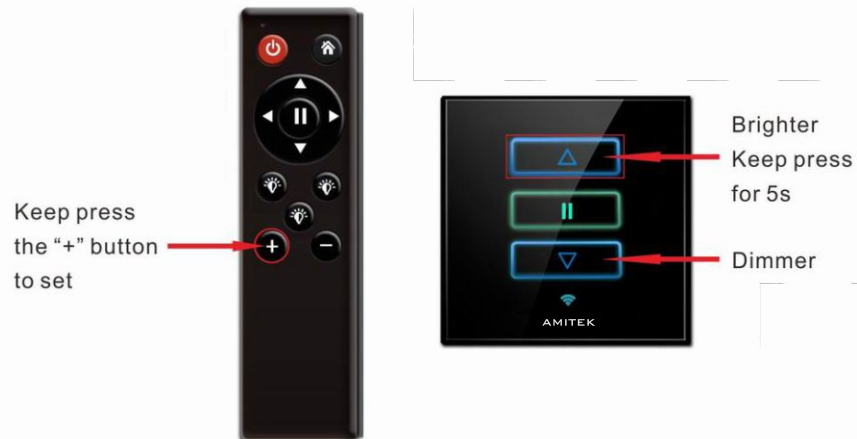


1



Keep press the button for 5s, you will hear a "di" sound, then you press the light button on the remote controller, after you hear a "buzz" sound around 2s, then finish setting (2gang,3gang switch setting is the same as this one).

2

Keep press the stop button on switch for 5s, you will hear a "di" sound, then press the stop button on remote controller, after hear "buzz" sound around 2s, finish setting. (The close/open button setting is the same as stop button).



3

Keep press the  button for 5s, you will hear a "di" sound, press the  button on remote controller, hear a "buzz" sound around 2s, then finish setting. (The dimmer button setting is the same as brighter button).

## How to pair the remote controller?



1 Keep press the setting key on remote controller for 10s, until the indicator blinking, power off all the switches, and then power on (you can power off total gate). Release the setting key after power-on for 2s, finish pairing. .

RF remote controller size ?



# How to delete the setting on remote controller?

Keep press the button for 5s



Keep press the all off button, finish the delete setting

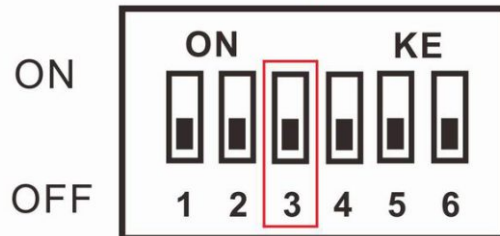
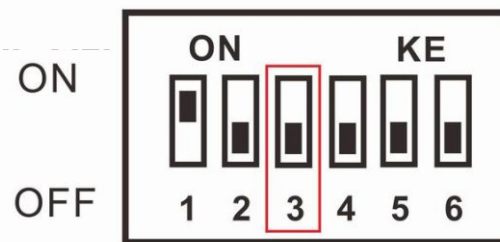
1

Keep press the switch button for 5s, you will hear a "di" sound, press the all on button on remote controller, you will hear a "buzz" sound around 2s, then finish delete setting. (The method of delete setting on all switches are the same).

2

This remote controller have "all off" function, only need pairing the switch with remote controller, then it will have all off function (Except curtain switch).

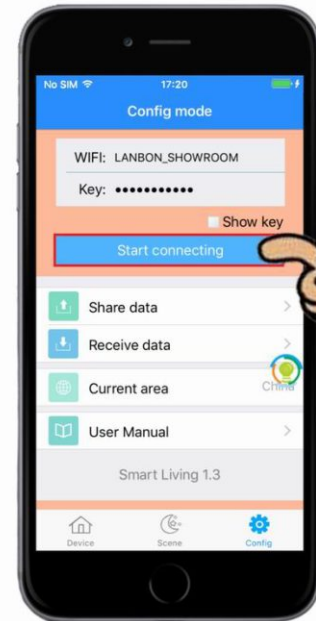
## Encode Structure



3

In the encode structure, if you dip the code 3 on, it indicates have all off function, if dip the code 3 off, then it indicates do not have all off function.

# How to use portable socket?



Click OK

1

Power on the socket, keep press the button for 10s, the blue indicator will flash quickly.

2

Open the app, enter into the **【Configuration】** interface, input the password, click **【Start connecting】**.



3

The interface darken means it start configuration, when the progress shows 100%, then finished configuration.

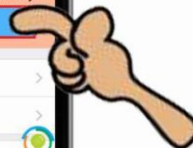


Click

4

After finished configuration, it will enter into device list interface, click the icon to test.

# How to use universal socket?



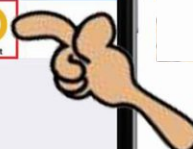
Click OK

1

Power on the socket, keep press the button for 10s, the blue indicator will flash quickly.

2

Open the app, enter into the **【Configuration】** interface, input the password, click **【Start connecting】**.



Click

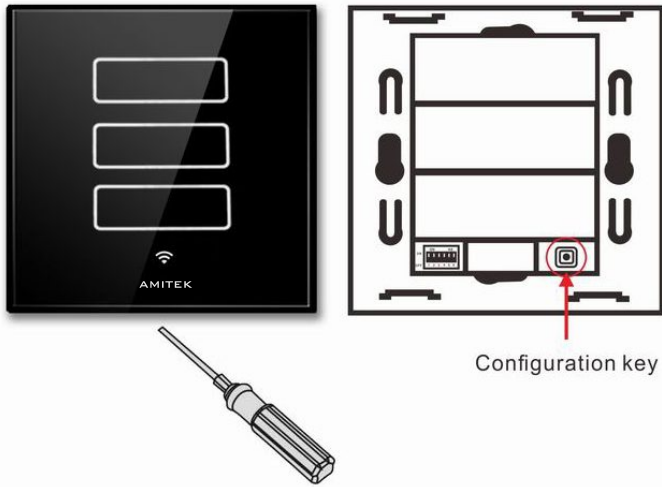
3

The interface darkens means it starts configuration, when the progress shows 100%, then finished configuration.

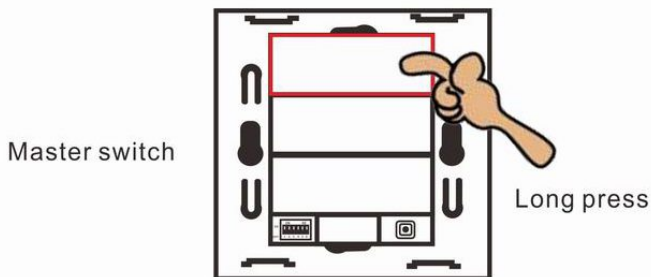
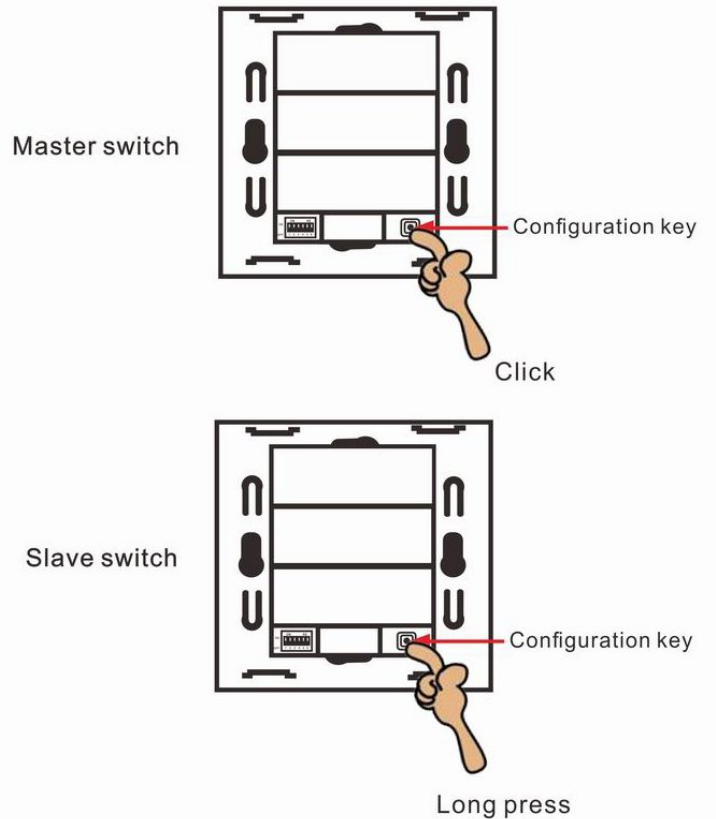
4

After finished configuration, it will enter into device list interface, click the icon to test.

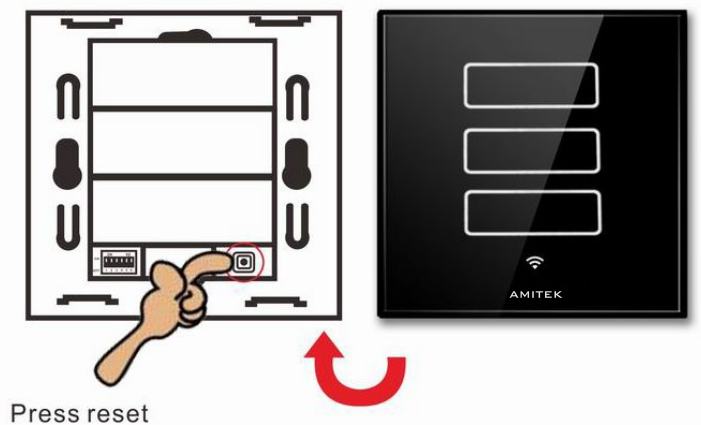
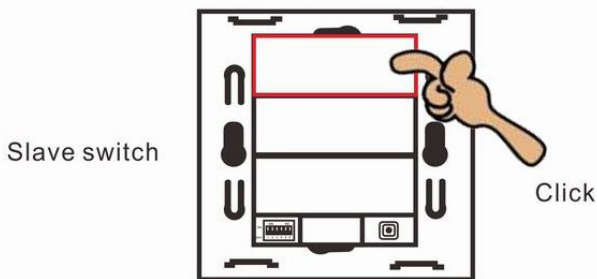
# How to mutual control RF 2.4 G switches ?



**1** Use a small screwdriver to separate the glass panel with back case.



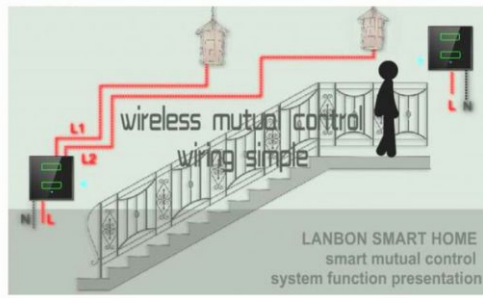
**2** Pressing the configuration key of slave switch for 5 seconds until the wifi indicator blinking,press the configuration key of master switch,until you hear a "di-"sound the background light blinking , 5 seconds later you will hear another "di" sound,the background light stop blinking,then you can release your hands from slave switch ,the "di" sound means mutual control successfully .



**3** Pressing the first button of master switch for 5 seconds,you can hear a "di-" sound and the wifi indicator is solid (still keep pressing),press the first button of slave switch you can hear buzz sound , release your hands when the buzz sound stop,mutual control successfully.

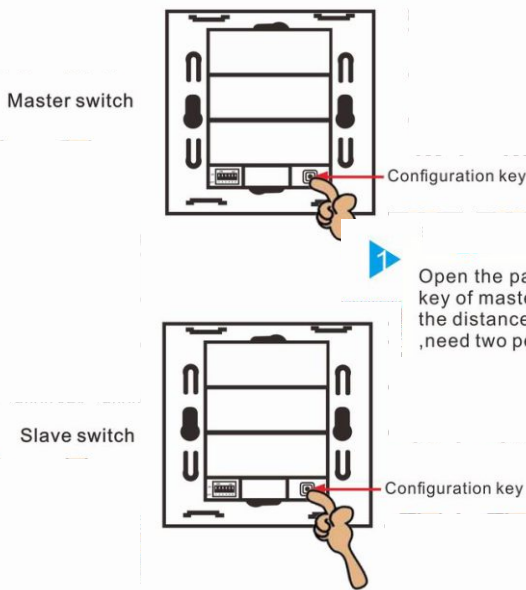
**4** Follow the same steps above,then press the configuration key of two switches for 1 second ,cover the panel ,configuration done.

# How to install mutual control switch?



- 1 Master switch, marked M, connect to light ,L wire and N wire.
- 2 Slave switch, marked S, connect to L wire and N wire.

# How to configure mutual control switch?



Open the panel, press the configuration key of master switch and slave switch (if the distance between two switches is far ,need two people work together ).



- 2 Open the app, enter into **【 Config mode 】** interface, input the correct wifi name and password, click **【 Start connecting 】** .



Configuration successful, wifi indicator keeps on, of failed repeat set 1 and 2.



- 3 The interface darkened means it entered into configuration, when progress reaches 100% means finish configuration.

- 4 After configuration, enter **【 Device list 】** interface, press button to test switch.